



## DSI Priority Topics

### Military Mission Line

Sustainment of Moratorium Protection

### EGTTR Maximization Plan

Gulf Range Enhancement Plan

Electronic Combat Range

Telemetry Relay Infrastructure

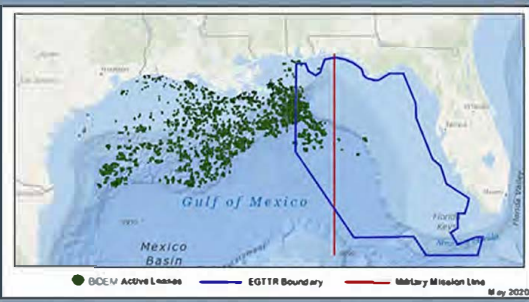
### Whole Facility Repair by Replacement

Eglin's NexGen

Weapons Technology Integration Center

Childcare Development Center

NAS Whiting Field's North Tower



The EGTTR provides areas of opportunities enabling multi-service test and training, and 5th and 6th generation development activities supporting our National security.



## DSI Committee Members

Tri-County Military Affairs Committees

Retired Military Personnel

Defense Contractors

Tri-County Commissioners

Eglin Complex Ex Officio

One Okaloosa EDC Management



### Sponsored by

The Economic Development Council  
of Okaloosa County, Florida  
DBA One Okaloosa EDC

Post Office Box 4097  
Fort Walton Beach, FL 32549  
USA

850-362-6467  
800-995-7374

Kay@oneokaloosa.org

Printing by Florida DEO

[www.oneokaloosa.org](http://www.oneokaloosa.org)



## Defense Support Initiatives

# 2021

# Legislative Summary

*The complexity of future warfare drives the need for more advanced infrastructure and weapon systems that operate at the speed necessary; adapt to situations in a complex, multi-domain environment; and/or perform multiple roles while executing primary missions.*

Santa Rosa – Okaloosa – Walton Counties, Florida



## Defense Support Initiatives

The Economic Development Council of Okaloosa County (DBA One Okaloosa EDC) originated the Defense Support Initiatives Committee in 1996 to support local military installations and missions, and their resultant economic impact. The DSI leverages community leadership and expertise from across the three-county region of Northwest Florida; Okaloosa - Santa Rosa - Walton Counties housing the Eglin Complex.

## Major Range & Test Facility Base

The Major Range and Test Facility Base (MRTFB) is a designated set of Department of Defense (DoD) facilities, ranges, and their associated workforce that provide the foundation, or base, for the Nation's Test and Evaluation (T&E) capabilities deemed critical to maintaining our Nation's Military superiority. Concurrently, the MRTFB supports the development of rapid response solutions to technology related issues experienced by warfighters engaged in conflict. The MRTFB is regarded as a "national asset" consisting of Army, Navy, and Air Force test ranges--one of which is managed by the 96th Test Wing at Eglin Air Force Base Florida; the Eglin Gulf Test & Training Range (EGTTR; aka Eastern Gulf Test & Training Range).

## Eglin Air Force Base



Eglin Air Force Base is a joint service installation supporting Air Force, Army and Navy test and training units, and hosts major organizations for numerous development programs, operational units, military schools and various Federal agencies. The 96th Test Wing, Eglin's host wing, is the test and evaluation center for Air Force air-delivered weapons, navigation and guidance systems, Command and Control systems, and Air Force Special Operations Command Systems.

## Hurlburt Field



Hurlburt Field, Auxiliary Field 9, is headquarters for Air Force Special Operations Command. The command's special operations forces (SOF) are highly trained, rapidly deployable Airmen, conducting global special operations missions ranging from precision application of firepower to infiltration, exfiltration, resupply and refueling of SOF operational elements.

## Duke Field



Duke Field, Auxiliary Field 3, is home to the 919th Special Operations Wing (SOW), the only special operations unit in the Air Force Reserve. The 919th SOW reports to the Air Force Reserve Command's Tenth Air Force in peacetime, and becomes part of AFSOC at Hurlburt Field during conflict.

## Tri-County Economic Impact

Santa Rosa Okaloosa Walton



Economic Impact	\$10.8 Billion
Total Defense Spending	\$4.3 Billion
Jobs	Over 93,200
Source: Florida Defense Fact Book January 2020	



With seven military installations in Northwest Florida, the annual economic impact for the military presence in the region is over \$22 Billion, according to the 2020 Florida Defense Handbook.

## Eglin Gulf Test & Training Range

The EGTR provides military range capabilities across the eastern Gulf; from NW FL to Key West. It includes 180,000 square miles of DoD controlled air-space, 724 square miles of adjacent land ranges, 3,200 square miles of airspace over adjacent land, 17 miles of Gulf shoreline, inter-connected radars to track test/training assets, and designated launch areas. Due to its tremendous capabilities, it is an integral part of DoD's MRTFB and Training Resources Strategy.

Multi-service basing and test and training utilization are of paramount importance in mission capabilities. Air, land and sea test and training areas associated with the EGTR can host large and complex joint exercises simultaneously.

Eglin AFB, in northwestern Florida, is one of ten Air Force Materiel Command (AFMC) host bases. As a critical part of the MRTFB, Eglin's primary functions are to support research, development, testing, and evaluation of conventional weapons and electronic systems and warfare, and to support multi-service air and ground training of operational units. Protection and enhancement of the EGTR is necessary to ensure these capabilities.

## Camp Simons



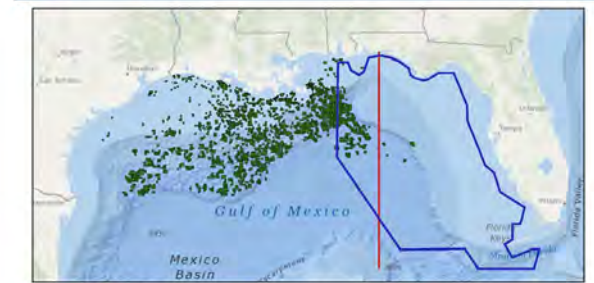
Camp Simons, the 7th Special Forces Group (Airborne) cantonment site, is located on Eglin's land range. The 7th SFG(A) consists of elite Army forces that are specially selected, trained, organized, and equipped to conduct special operations in support of theater and national objectives.

## Naval Air Station Whiting Field



NAS Whiting Field is home to Training Air Wing Five. The complex consists of 2 primary airfields and 13 Navy Outlying Landing Fields. NASWF trains Navy, Marine Corps, Coast Guard and international student aviators in the primary and intermediate phases of fixed wing aviation, and helicopters advanced training. NASWF is the busiest Naval air complex in the world.

## Eglin Gulf Test & Training Range



BOEM Active Leases EGTR Boundary Military Mission Line May 2020

Eglin manages the eastern Gulf Test & Training Range; the largest over-water military range in the nation. A national asset, the EGTR is a unique resource offering tremendous joint capabilities for test and training exercises. Its expansive size supports simultaneous maritime, air and land training activities.